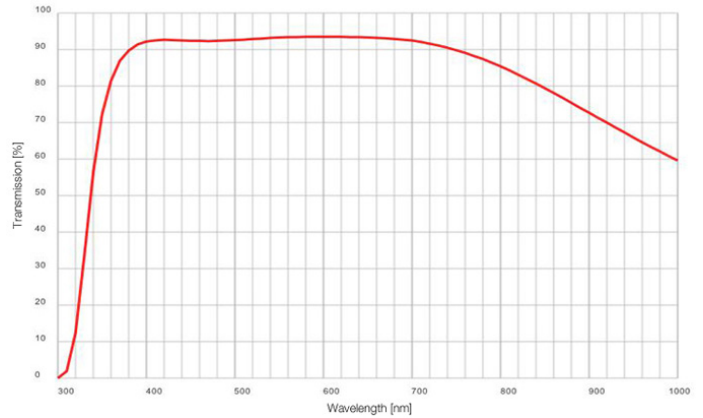
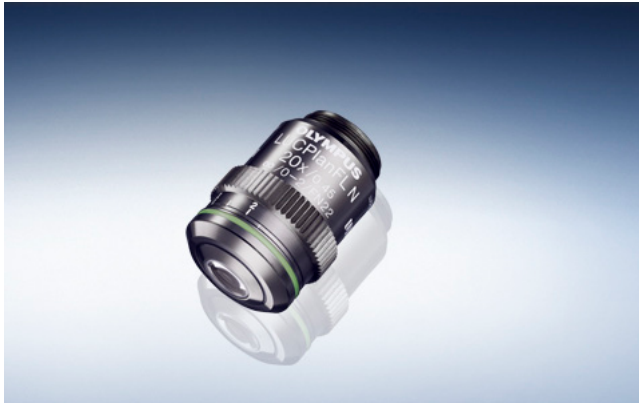


LUCPLFLN 20X

LUCPLFLN Series

These universal Semi-Apochromat objectives are dedicated to tissue culture observations through bottles and dishes, offering excellent contrast and resolution in brightfield, DIC and fluorescence observations.



W.D.	MAG	F.N.	NA	IM
6.6 - 7.8	20x	22	0.45	-

BF	DF	FL	DIC	IR	TIRF
MPE	PH	PO	RC	UV	CY

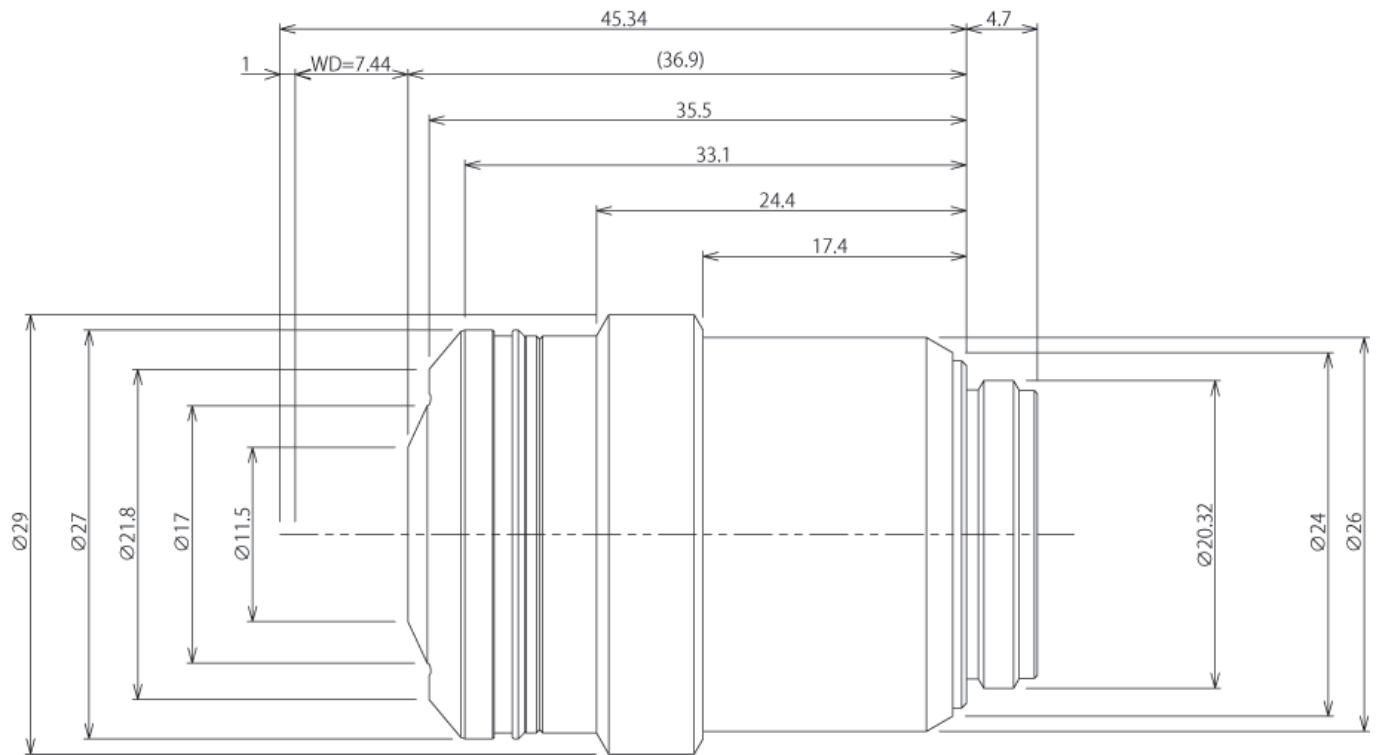
Numerical Aperture (NA)	0.45
Working distance (W.D.) (mm)	6.6 - 7.8
Field Number (F.N.)	22
Cover Glass Thickness (mm)	0 - 2
Immersion	-
Spring	-
Correction Collar	Yes
Iris Diaphragm	-
Waterproof & Oil proof function	-
Ultra Wide anti-reflection coating	Yes
Super apochromatic	-
Brightfield	Excellent
Darkfield	Good
DIC	Excellent
Phase Contrast	N/A
Relief Contrast	N/A
Polarized Light	Good
Fluorescence (B, G Excitation)	Excellent
UV Fluorescence (at 365nm)	Excellent
IR DIC	Good
Multi photon excitation	Limitation

Specifications, design and accessories are subject to change without any notice or obligation on the part of the manufacturer.

Data Sheet

LUCPLFLN 20X

LUCPLFLN Series



Specifications, design and accessories are subject to change without any notice or obligation on the part of the manufacturer.